

SOST Antibody (Center)
Purified Rabbit Polyclonal Antibody (Pab)
Catalog # AP6261c**Specification**

SOST Antibody (Center) - Product Information

| | |
|-------------------|------------------------|
| Application | IHC-P, WB,E |
| Primary Accession | Q9BQB4 |
| Reactivity | Human |
| Host | Rabbit |
| Clonality | Polyclonal |
| Isotype | Rabbit IgG |
| Antigen Region | 134-163 |

SOST Antibody (Center) - Additional Information**Gene ID** 50964**Other Names**

Sclerostin, SOST

Target/Specificity

This SOST antibody is generated from rabbits immunized with a KLH conjugated synthetic peptide between 134-163 amino acids from the Central region of human SOST.

Dilution

IHC-P~~1:10~50

WB~~1:1000

E~~Use at an assay dependent concentration.

Format

Purified polyclonal antibody supplied in PBS with 0.09% (W/V) sodium azide. This antibody is prepared by Saturated Ammonium Sulfate (SAS) precipitation followed by dialysis against PBS.

Storage

Maintain refrigerated at 2-8°C for up to 2 weeks. For long term storage store at -20°C in small aliquots to prevent freeze-thaw cycles.

Precautions

SOST Antibody (Center) is for research use only and not for use in diagnostic or therapeutic procedures.

SOST Antibody (Center) - Protein Information**Name** SOST ([HGNC:13771](#))

Function Negative regulator of bone growth that acts through inhibition of Wnt signaling and bone formation.

Cellular Location

Secreted, extracellular space, extracellular matrix

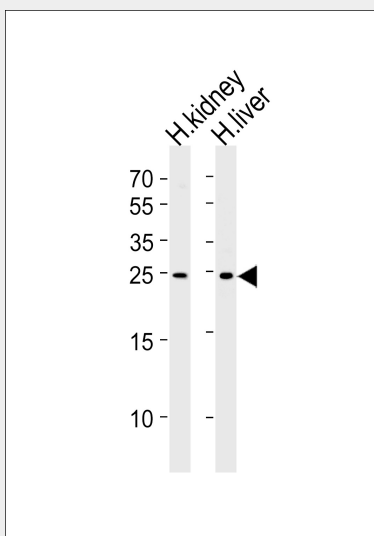
Tissue Location

Widely expressed at low levels with highest levels in bone, cartilage, kidney, liver, bone marrow and primary osteoblasts differentiated for 21 days. Detected in the subendothelial layer of the aortic intima (at protein level).

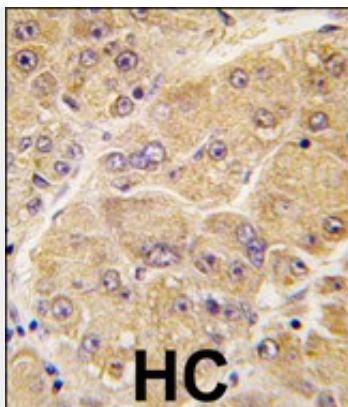
SOST Antibody (Center) - Protocols

Provided below are standard protocols that you may find useful for product applications.

- [Western Blot](#)
- [Blocking Peptides](#)
- [Dot Blot](#)
- [Immunohistochemistry](#)
- [Immunofluorescence](#)
- [Immunoprecipitation](#)
- [Flow Cytometry](#)
- [Cell Culture](#)

SOST Antibody (Center) - Images

Western blot analysis of lysates from human kidney and liver tissue lysates (from left to right), using SOST Antibody (Center) (Cat.#AP6261c). AP6261c was diluted at 1:1000 at each lane. A goat anti-rabbit IgG H&L(HRP) at 1:5000 dilution was used as the secondary antibody. Lysates at 35ug per lane.



Formalin-fixed and paraffin-embedded human hepatocarcinoma tissue reacted with SOST antibody (Center)(Cat.#AP6261c), which was peroxidase-conjugated to the secondary antibody, followed by DAB staining. This data demonstrates the use of this antibody for immunohistochemistry; clinical relevance has not been evaluated.

SOST Antibody (Center) - Background

Sclerostin is a secreted glycoprotein with a C-terminal cysteine knot-like (CTCK) domain and sequence similarity to the DAN (differential screening-selected gene aberrative in neuroblastoma) family of bone morphogenetic protein (BMP) antagonists. Loss-of-function mutations in this gene are associated with an autosomal-recessive disorder, sclerosteosis, which causes progressive bone overgrowth. A deletion downstream of the sclerostin gene, which causes reduced sclerostin expression, is associated with a milder form of the disorder called van Buchem disease.

SOST Antibody (Center) - References

- Semenov,M.V., J. Biol. Chem. 281 (50), 38276-38284 (2006)
- Ellies,D.L., J. Bone Miner. Res. 21 (11), 1738-1749 (2006)
- Balemans,W., J Musculoskelet Neuronal Interact 6 (4), 355-356 (2006)
- Gardner,J.C., J. Clin. Endocrinol. Metab. 90 (12), 6392-6395 (2005)